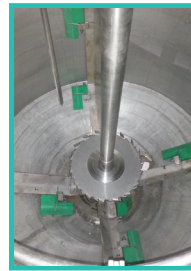


# 1. MIXERS

## 1.6. SM SERIES PLATFORM TYPE MIXERS

### AREAS OF USE

It is a model of high-speed mixer machines designed in high capacities for platforms. They are used in the production of paints, construction chemicals, floor coverings, plaster, printing inks, pigment pastes, adhesives, padding materials, mastics; casting components, composite materials, cosmetic products, food products, and pesticides, etc..



### STANDARD SPECIFICATIONS

In platform type mixers, production can be made in 1,2,3 or 4 vessels with a single machine. They are ideal mixers for large capacity productions. In addition to our standard models, they can be produced for your projects according to your desired capacity and engine power. Frequency inverter technology, on the other hand, has variable-speed adjustment. They can move up and down over their bodies with an electro-hydraulic system, and they can make mixing at the desired height. They have cooling engines adapted to the main electric motor, which allows long-term operation at low speeds. It has a time-adjusted mixing ability as well.

### OPTIONAL SPECIFICATIONS

Many specifications are optional such as vessel side and bottom scraper system, movable and automatic vacuum system, ex-proof design in ATEX Zone 1 EEx dIIB T4 standards, Double-type disc, Temperature measurement system, automatic up and down of the mixer according to the level of the product in the mixing vessel, load-cell weighing system, recipe controlled semi-automatic or fully automatic PC/PLC control system.

Machine Type	SM 1-I	SM 2-I	SM 3-I	SM 4-I	SM 5-I	SM 7-I	SM 8-I	SM 10-I
Disperser (Kw)	30 - 75	55 - 90	75 - 90	90 - 110	110 - 132	132 - 160	160 - 200	185 - 315
Disperser Speed (rpm)	0-1500	0-1500	0-1200	0-1200	0-1200	0-1200	0-1200	0-1200
Total Volume (Lt)	1000	2000	3000	4000	5000	7000	8000	10000
Efficient Volume (Lt)	200 - 800	400 - 1600	600 - 2400	800 - 3200	1000 - 4000	1400 - 5600	1600 - 6400	2000 - 8000